



Bloomberg offers multiple tools for real time market data, execution, and risk analytics for Eris Swap Futures.

Bloomberg Ticker Symbols

Example: LITM8 (2Y Stnd June 2018)

L	I	T	M	8
'L'		'T'	'M'	'8'
Indicates Instrument is an Eris Standards contract		Dictates the tenor <u>Tenor</u> 2Y = T 3Y = C 4Y = D 5Y = W 7Y = B 10Y = Y 30Y = E	Month Codes Active ¹ = A Mar = H Jun = M Sep = U Dec = Z	The last digit of the year of the Effective Date Ex. 2018

¹The active contract represents the Eris Standards with the fewest days until its Effective Date.

ERIS1 <GO>

View live streaming markets

	Bid	Ask	Coupon %		
Size (Contracts)	Rate/NPV	Rate/NPV	Size (Contracts)		
Eris Standards (Open Interest 175,860)					
1) 2Y Stnd Mar 2018-2020 (LITM8)	550	1262	1272	4550	1.750
2) 3Y Stnd Mar 2018-2021 (LICH8)	1990	2222	2234	530	1.750
3) 4Y Stnd Mar 2018-2022 (LIDH8)	1500	2270	2290	500	2.000
4) 5Y Stnd Mar 2018-2023 (LIWH8)	1518	3075	3095	25	2.000
5) 7Y Stnd Mar 2018-2025 (LIBH8)	765	4820	4850	249	2.000
6) 10Y Stnd Mar 2018-2028 (LIYH8)	750	5350	5390	750	2.250
7) 30Y Stnd Mar 2018-2048 (LIEH8)	199	9480	9600	100	2.500
8) 2Y Stnd Jun 2018-2020 (LITM8)	500	1450	1460	500	1.750
9) 3Y Stnd Jun 2018-2021 (LICH8)	500	2426	2440	500	1.750
10) 4Y Stnd Jun 2018-2022 (LIDH8)	500	3430	3450	500	1.750
11) 5Y Stnd Jun 2018-2023 (LIWH8)	1000	3305	3325	1500	2.000
12) 7Y Stnd Jun 2018-2025 (LIBH8)	350	5060	5090	250	2.000
13) 10Y Stnd Jun 2018-2028 (LIYH8)	750	5600	5640	750	2.250
14) 30Y Stnd Jun 2018-2048 (LIEH8)	200	9660	9780	200	2.500
Total Eris Open Interest: 203,063					

MDM <GO>

See full market depth & today's activity

Total	Size	Bid	Ask	Size	Total
998	998	3065.0000	3085.0000	25	25
1498	500	3065.0000	3085.0000	1000	1025
1518	20	3065.0000	3090.0000	500	1525
1527	9	3035.0000	3090.0000	20	1545
1827	300	3000.0000	3260.0000	150	1695
1831	4	2995.0000	3345.0000	15	1710
1981	150	2980.0000	3350.0000	44	1754
2131	150	2960.0000	3355.0000	23	1777
2281	150	2945.0000	3380.0000	15	1792
			3385.0000	14	1806
			3475.0000	44	1850

Execute Eris Swap Futures with Bloomberg EMSX

Bloomberg Execution Management System (EMSX) offers electronic trading capabilities for Eris Swap Futures.

Traders can launch tickets from the MDM screen, or on EMSX <GO>.

EMSX Trading Ticket

LIYH8 Comdty 5210.0000 5260.0000 / 5300.0000 Volume 377

10Y Swap Future Mar18 As of Feb 06 OpenInt 10435

Quick Buttons Order Route Manual

Side+ Quantity+ Ticker+ Type+ Limit Price+ TIF+ Broker+

BUY - 1,000 + LIYH8 Comdty LMT - 5,330,0000 + DAY - BMTB

HandInst+ CashQ (USD) Account Instructions Strategy

AUTO 5,330,000,0

More Fields Buy 1,000 LIYH8 Comdty @ 5,330.00 BMTB

Manage Eris Inventory, Risk and P&L with Bloomberg TOMS

Bloomberg Trade Order Management System (TOMS) provides an optimized workflow including compliance tools, market data, execution and third-party downstream systems for Eris Swap Futures.

Users can manage their positions from pre-trade through post-trade with Bloomberg TOMS.

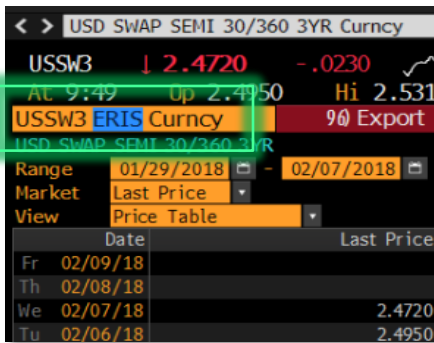
In addition to functionality supporting the listed Eris contracts, Bloomberg also provides spot-starting swap rate data based on the Live Eris Swap Curve, allowing a direct comparison to vanilla OTC interest rate swaps.

The Live Eris Swap Curve may be used instead of OTC swap rates by simply changing your default swap price source to "ERIS".



Historical Yields, Graphs, Spreads and Technical Analysis

HP <GO>



GP or GIP <GO>



TECH <GO>



Eris vs. OTC Swap Quotes and Additional Functions

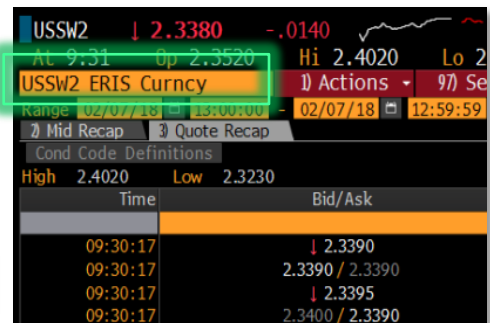
SWPM (Swap Manager)¹



ALLQ <GO> (All Quotes)



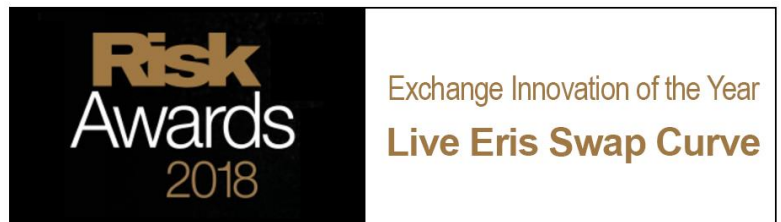
QRM <GO> (Quote Recap Monitor)



¹For SWPM to value off the Eris curve, first change the swap defaults in SWDF.

www.erisfutures.com

Contact Eris to Get Started:
 (888) 587-2699 option 2 for Sales support
 Email: sales@erisfutures.com



Futures trading is not suitable for all investors, and involves the risk of loss. This communication is directed only to persons with investment experience (i.e., "investment professionals") and does not constitute legal or investment advice. All matters pertaining to rules and specifications herein are made subject to and are superseded by official Eris Exchange rules. Copyright © 2018 Eris Exchange LLC. All rights reserved